



Created by:	Gábor Tóth	Starschema	Consultant
Controlled by:	Tamas Földi	Starschema	Project Manager
Approved by:	Tamas Földi	Starschema	Project Manager

**Starschema PL/SAP Connector  
PL/SAP Connector Service installation guide**



CONTENTS:

<b>1. PREREQUISITES .....</b>	<b>4</b>
<b>2. INSTALLATION PROCEDURE .....</b>	<b>5</b>
2.1 WINDOWS INSTALL .....	5
2.2 LINUX INSTALL.....	8
2.3 POST-INSTALL STEPS.....	8
<b>3. STARTING THE SERVICE.....</b>	<b>9</b>
3.1 START THE SERVICE ON WINDOWS .....	9
3.2 START THE SERVICE ON LINUX .....	9



REVISION HISTORY:

Rev.	Date	Author	Description
1.0	2009-07-01	Gábor Tóth	Initial version

## 1. PREREQUISITES

PL/SAP Connector requires usable, well configured Oracle RDBMS and SAP R3 systems for data integration tasks. These applications must be installed before the first run of PL/SAP Connector Service.

- An Oracle9i (or later) database required as target system.
- A new user is required for types and tables created by PL/SAP Connector application. This user must have the **CONNECT** and **RESOURCE** roles. Additionally, other permissions are necessary for the java stored procedures. The following scripts describes and sets these permissions:

```
DECLARE
    KEYNUM NUMBER;
BEGIN
    SYS.DBMS_JAVA.GRANT_PERMISSION(
        grantee          => '<schema name>'
        ,permission_type => 'SYS:java.net.SocketPermission'
        ,permission_name => '<ip address>:<port>'
        ,permission_action => 'connect'
        ,key              => KEYNUM
    );
END;
```

```
DECLARE
    KEYNUM NUMBER;
BEGIN
    SYS.DBMS_JAVA.GRANT_PERMISSION(
        grantee          => '<schema name>'
        ,permission_type => 'SYS:java.net.SocketPermission'
        ,permission_name => '<ip address>:<port>'
        ,permission_action => 'resolve'
        ,key              => KEYNUM
    );
END;
```

```
DECLARE
    KEYNUM NUMBER;
BEGIN
    SYS.DBMS_JAVA.GRANT_PERMISSION(
        grantee          => '<schema name>'
        ,permission_type => 'SYS:java.net.SocketPermission'
        ,permission_name => '<ip address>:<port>'
        ,permission_action => 'accept'
        ,key              => KEYNUM
    );
END;
```

END;

- An SAP R/3 system is necessary as source system
- An SAP user should be dedicated for the execution of the RFC function modules. The SAP installation procedure available in “PL/SAP SAP Installation Guide” documentation
- Java 1.3 JDK (or later)

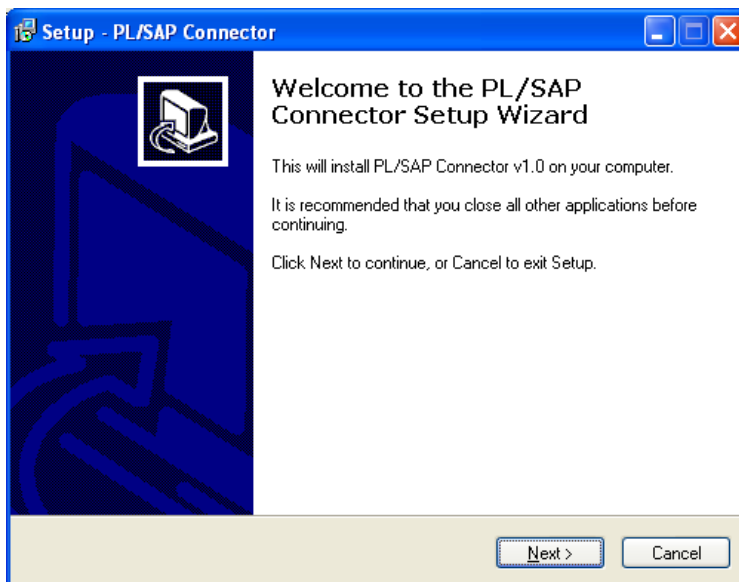
## 2. INSTALLATION PROCEDURE

The installation procedure differs on Windows and Linux systems.

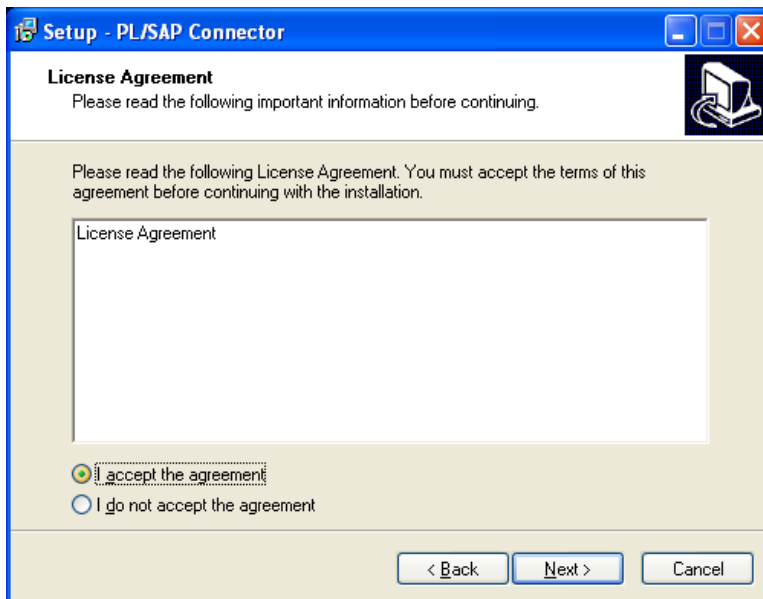
### 2.1 Windows install

The install process on Windows operating system is very simple and easy. **PLSAP Connector.exe** starts the installation wizard, which guides the user through the procedure.

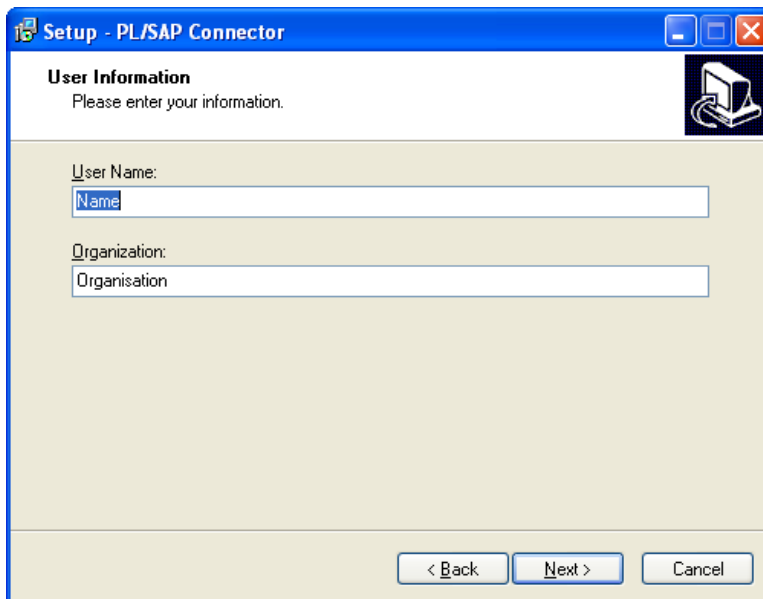
1. Click on the *Next* button on the welcome window.



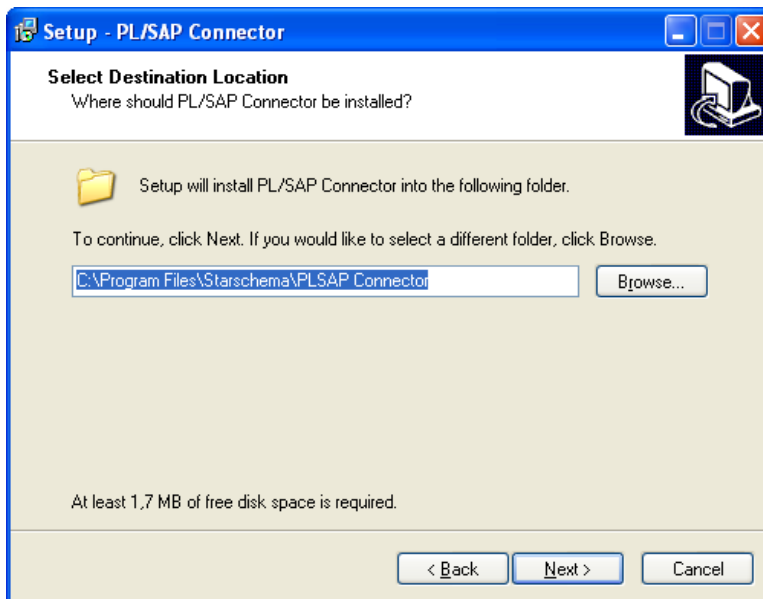
2. Read the license agreement carefully and click on *Next* button if you accept it.



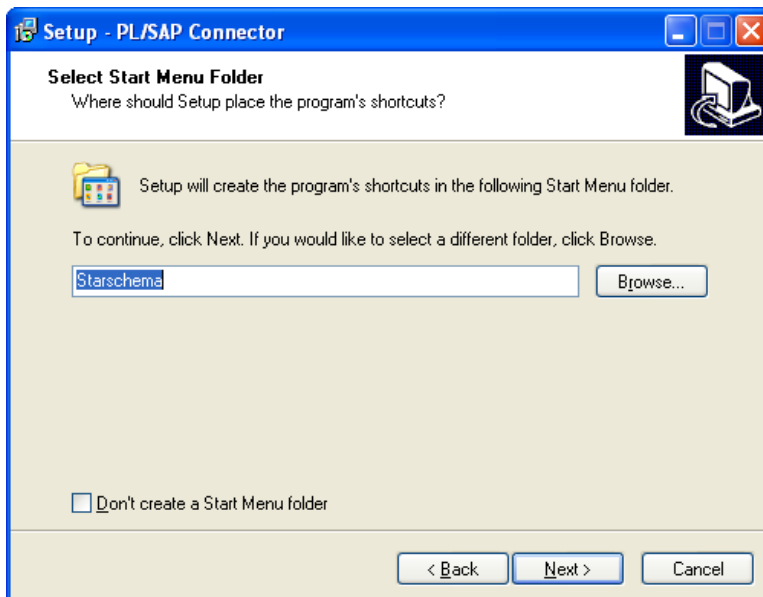
3. Fill your name and organization (this is filled by default) and click on *Next* button.



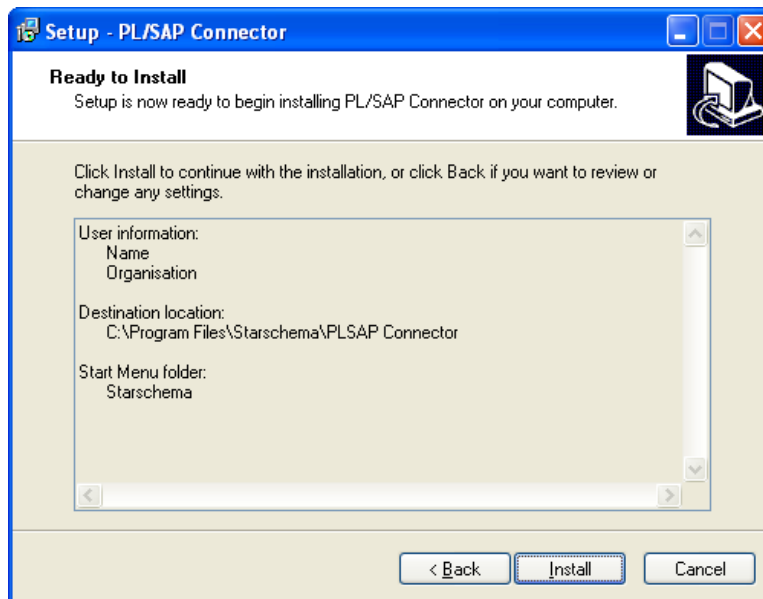
4. Select the destination folder of the application and click *Next* button.



5. Select the Start Menu folder and click on *Next* button.



6. Click on *Install* button.



## 2.2 Linux install

The install procedure on Linux operating system is easy as on Windows. The PL/SAP Connector installation is based on RedHat Package Manager (RPM). The install media includes the ***plsap-connector-1.0-1.noarch.rpm*** file, which contains the application and deployment scripts. The following command starts the installation procedure:

```
rpm -uv plsap-connector-1.0-1.noarch.rpm
```

No other interaction is needed until the installation is in progress.

## 2.3 Post-install steps

The following steps will prepare Oracle database and SAP system to communicate with the Service.

- Oracle  
One or more SQL scripts are available in the ***src*** folder which can be found in the application's root directory (in case of Windows system it is ***Program Files\Starschema\PLSAP Connector\src\plsql*** by default, and in case of Linux distributions it is ***usr/local/plsap/src/plsql***). On Windows operating system it contains three scripts ***uninstall\_plsap\_schema.sql***, ***install\_plsap\_schema\_headers.sql***

and ***install\_plsap\_schema\_bodies.sql***. On Linux operating system it contains an aggregated file containing these scripts in one file ***install\_plsap\_schema.sql***. Run these scripts with the dedicated schema owner user. These scripts will create the required tables and types for the PL/SAP application.

- Oracle Application Express (APEX)  
The Web interface is implemented in APEX. The source code for the installation described in ***PLSAP Apex frontend installation guide.doc*** can be found in the ***srclapex*** (on Linux ***srclapex***) folder in the root folder of the application (see above).
- Since the Service is developed in Java programming language some Java binaries needed to load into the Oracle database. These Java classes can be found in the ***java*** folder under the ***src*** directory (mentioned above) packaged in the ***plsap\_svc\_db.zip*** file. It can be easily load into the database with the ***loadjava*** tool of Oracle. The target of this load must be the newly created schema (see above). The loaded Java classes must be compiled after the load.
- The application uses special function modules in SAP system. The install process of these function modules is not part of this documentation. It can be found in the “*PL/SAP Connector – SAP Installation Guide*” documentation.
- Finally the provided ***plsap.lic*** license file must be copied into the license folder in the root directory of the application.

### 3. STARTING THE SERVICE

#### 3.1 Start the Service on Windows

Click on the PLSAP Connector icon on the Desktop or select it in the Start Menu or start the ***PLSAP Connector.bat*** in the root directory of the application and give the name or IP address of the host machine.

#### 3.2 Start the Service on Linux

On Linux operating system the Service will be started automatically when the server starts or it can be started with the following command:

***letclinit.d/plsap-connector start***



Copyright 2009, Starschema, All Rights Reserved.

This document is provided for information purposes only, and the contents hereof are subject to change without notice. This document is not warranted to be error-free, nor is it subject to any other warranties or conditions, whether expressed orally or implied in law, including implied warranties and conditions of merchantability or fitness for a particular purpose. We specifically disclaim any liability with respect to this document, and no contractual obligations are formed either directly or indirectly by this document. This document may not be reproduced or transmitted in any form or by any means, electronic or mechanical, for any purpose, without our prior written permission. Starschema is a registered trademark of Starschema Limited. Oracle is a registered trademark of Oracle Corporation and/or its affiliates. Business Objects and the Business Objects logo, BusinessObjects, Crystal Reports, Web Intelligence and Xcelsius are trademarks or registered trademarks in the United States and/or other countries of SAP AG and/or affiliated companies. Other names may be trademarks of their respective owners.